

SUMMER 2018

SIDE ^BY ^Y SIDE

A Newsletter from The Institute of Biblical Leadership

PAGE 4

An Interview with Dr. Russ Lloyd

PAGE 8

IBL in Kenya: Developing Spiritual Leaders Who Train Others



THE INSTITUTE
OF BIBLICAL
LEADERSHIP

because leaders who
honor God don't just
come out of nowhere

Faithfully Advancing



We are burdened to make a difference!

This is the final sentence of IBL's vision. And it expresses the sentiment of every IBL team member. We long to see God's leaders advance in their understanding and practice of biblical leadership. We are excited when we see God's Word make a difference in a leader's life and ministry, to see their renewed enthusiasm for the work of the ministry, and to observe the God-glorifying impact on the ministries they lead.

How do we know whether we

are having impact that makes a difference? One way is by listening to our clients' feedback. Earlier this year I received the following note from one of our consulting clients, the senior pastor of a large church in the Southeast.

...thank you again for your recent ministry to our church. I am delighted to tell you that we have fully instituted the new structure of the committee you counseled us on. This past Sunday night I shared the new structure and process with the entire church family and

it was very well received. The new committee has already been immersed in [its work] and the spirit of the meetings is dramatically different—such a spirit of unity! Thanks again for your time and input.

We have an extensive ministry with this church. Over the past decade we have served them with leadership assessment, organizational leadership planning, role clarification, long range ministry planning, one-on-one leader coaching, and crisis response. So, we know them well; and they know us, trust us, and appreciate our biblical, practical, relevant counsel.

Receiving this kind of feedback is a great encouragement to us. When we hear from our clients of the benefits they are experiencing as they practically apply the biblical principles they've learned, then we have confidence that we are indeed advancing toward our vision.

Dawn and I conducted a follow-up online counseling session a few weeks ago. The couple had been with us in-residence some six months prior and they have been making great progress since then. Toward the end of the online session, the wife said,

Before coming to IBL, I was told by another of your clients that if I came I would be given the biblical tools needed to address any situation that might

arise in my life. And I really feel as if I now have those tools. I've been able to successfully address the issues I was facing, and I'm confident these tools will allow me to correctly address new challenges as they arise.

Just this week I received the following note from a client regarding a teaching I had given him on biblical communication,

That summary page is a "holy 4x4" hitting me in the gut; then when I double-over, it hits me on the butt. WOW! GUILTY, GUILTY, GUILTY of violating all verses and using the majority of the "cutting and tearing-down words" listed, as well as others not listed. I definitely need what you are teaching me.

Making a real, tangible difference in the lives and ministries of God's leaders; we are burdened to have this kind of impact. And we praise God that He allows us to do so as we faithfully draw on His Word for insight and counsel.



Dr. David Phelan
President

An Interview with Dr. Russ Lloyd



DR. RUSS LLOYD'S heart is for our Brothers and Sisters in Christ in Vietnam. In March, Russ completed his thirty-third pastoral training mission to this southeast Asia country. His ministry there began in 1998 when he was invited to lead a one-time training retreat for pastors and church leaders. Since then, he's been going every six months except for a two-year period when the communist authorities did not permit his entry to the country. In 2005, IBL established a full-time in-country presence under the leadership of Pastor Doan Nhat Tan, the current Director of IBL-Vietnam. To date, Pastor Tan has graduated 250 students through the three-year training program that he and Dr. Lloyd developed.

Russ' March trip marks the conclusion of his labors in Vietnam, but this milestone also marks the beginning of a new

season of ministry in Vietnam overseen by IBL's President, David Phelan, and IBL Board Member, Pastor Matt Moser.

Q: Why does Vietnam hold a special place in your heart?

My assignment during the Vietnam War was as an advisor to the Vietnamese Air Force. As such, unlike most American soldiers I lived and worked with the Vietnamese on a daily, 24/7 basis. I found the Vietnamese people to be a gracious people and I fell in love with them and their culture.

Q: What factors led you to say "yes" to that initial request in 1998 to conduct pastoral training?

I became exceptionally close to one of the Vietnamese officers

I advised during the war, a Lieutenant An. We became like brothers, and he & his wife took care of the infant girl Doris & I were adopting and nursed her from death's door to health (see in the upper left photo on page 6, Russ's daughter, Jen, with Russ during the March trip). I shared the Gospel with An several times but he never trusted Christ as his Savior. In 1995 when I learned An was still alive I asked God to allow me to return to Vietnam to share the Gospel with him one last time. God answered that prayer three years later (1998) and I returned to Vietnam and was able to meet with An & his wife: praise God they both trusted Christ for their eternal salvation!

Q: You have spent a lot of time in Vietnam over a long period of time, starting in the war days of 1971, then again starting

in 1998 and continuing until this past month. What major changes have you seen during that time?

South Vietnam fell to Communist rule in 1975 and experienced 15 dark years of a closed country. In 1990, the Communists began to open Vietnam to the world in their search for economic development. When I first returned to Vietnam in 1998 nothing much had changed in the twenty-seven years since I had left, but following that, rapid economic development began and significant improvements in infrastructure brought increased comfort to the Vietnamese people. Anti-Christian persecution was very strong forcing the evangelical Christian church underground. Only in recent years have we seen some slow improvements regarding persecution.

Q: What are the main challenges faced by your students as they serve Christ in Vietnam?

The chief challenge for the underground church remains persecution from the Communist government. Improvements have been made, but religious freedom remains elusive. Also, a very low standard of living (and the attendant poverty) results in scarce resources for local churches and pastors

Q: What led you to establish IBL-Vietnam in 2005?

We had originally committed to return to Vietnam twice per year for 10 years to deliver pastoral training seminars, and to “train the trainer” so that select pastoral leaders could be equipped to carry on the ministry going forward. After about 5 years we began to see that the need

for pastoral training in sound doctrine was so enormous, and well beyond the capacity for the few pastors we had trained. Accordingly, the Lord led us to establish IBL-Vietnam as a permanent ministry, led by a national pastor on our team (Pastor Tan) who oversees our training program and provides the other aspects of IBL’s ministry--coaching, consulting, and counseling--to leaders in Vietnam.

Q: What has been the major impact of IBL’s ministry in Vietnam?

I am repeatedly told by our students that IBL remains one of very few ministries that have persisted over the years, continuing to provide sound doctrinal teaching year after year. By God’s grace, our faithfulness to God’s calling has transformed the lives of hundreds of leaders and thousands of believers all

across that nation. We are deeply grateful for the open door God has preserved for us in Vietnam.

Q: What have you personally learned through your service and time in Vietnam?

The fires of persecution and adversity breed a depth of faith that we in the West have not been blessed with. When I returned from my first ministry in Vietnam in 1998 I told my wife we needed to pray for persecution. The Vietnamese believers have a contagious zeal and love for their Lord and Savior. They are not complacent and do not take their salvation for granted. Rather, they vibrantly live out their faith on a daily basis.

Q: Have you discovered any leadership lessons unique to Vietnamese culture?

The effect of culture is profoundly powerful! When we minister in cultures different from our own, as leaders we must be ever-careful to understand and respect the nuances of the culture in which we minister. We must never compromise biblical Truth, but we must be sensitive to how that Truth is presented.

Q: Now that your journeys to Vietnam have come to a close, what will you miss the most?

The sweet and gracious people of Vietnam, the many friendships with which I have been blessed,

and particularly my deep, special friendship with Pastor Tan.

Q: What challenges remain to be addressed in the years to come?

In-country leadership of the ministry of IBL-Vietnam is presently provided by Pastor Tan. Within the next 5-10 years a successor will be needed. We have identified a man (Pastor Dang) to be that successor and Pastor Tan is presently training him. Of particular importance is for Dang to strengthen his facility with English. A second challenge is for IBL-Vietnam to secure its own training facility. We currently are blessed with the use of a private home with a comfortable provision for training. That facility will one day no longer be available.

Thank you for upholding IBL-Vietnam in your prayers and with your finances. Please pray for us as the team prepares for the upcoming trainings in August and October. Pray for Pastor Tan and Pastor Dang as they faithfully serve and develop leaders in Vietnam on a daily basis. Pray for Dang's fluency with English to increase. And please pray for the entire IBL-Vietnam team as we seek to follow God's leading in this next exciting season of ministry, that IBL-Vietnam will increase its reach, effectiveness and impact for God's glory.



IBL IN KENYA

Developing Spiritual Leaders Who Train Others



We are excited about a new opportunity to expand our impact in the country of Kenya. Having successfully completed an initial five-year training program with Pastor Wilfred Githongo in Kijabe, we are now planning to conduct parallel programs in Kijabe and Nairobi. This will be a significant expansion of our efforts in Kenya. It is a step that we are taking deliberately and carefully, being faithfully obedient to the Holy Spirit's leading and IBL's vision to "equip and encourage spiritual leaders."

Our work in Kenya is not unlike the work of Paul with Timothy: equipping, encouraging, and sending his spiritual son to pastor and strengthen local churches. We too are passionate about assisting leaders to become the men, women, and ministry leaders God desires. Our ministry venues—training, coaching, consulting and counseling—

give us the flexibility we need to address the full range of issues facing God's leaders, so that the man and woman of God is fully prepared to serve faithfully, advance Kingdom work, and bring God glory.

In majority world settings we utilize a self-sustainable, multi-faceted training program. We focus on the three key challenges faced by leaders in these regions: rampant theological error due to a lack of access to sound biblical education; fleshly forms of leadership driven by money, position, power and title; and culturally-driven legalistic practices instead of Holy Spirit-led transformation. Our training curriculum (see adjacent chart) addresses these needs with theological essentials, biblical leadership essentials, and Word-driven pastoral ministry essentials. The training program is three

years in length with students receiving training twice per year.

We are seeking to enlist partnering churches in the U.S. to support this endeavor, both financially and in the delivery of the training. This will benefit our students, exposing them to the ministry experiences and insights of seasoned pastors. Our partners will provide their expertise especially to the Essentials of Pastoral Ministry, which has a strong emphasis on effective Bible study and preaching.

In addition, we will give special training to a subset of our students to enable them to train others (see the "Trainer Focus" topics in the chart on the next page), so that leader development becomes self-reproducing in a six-year time-frame. This will allow IBL to refocus our efforts elsewhere while our graduates develop new leaders in their own regions. To be self-reproducing, the program must also be self-sustaining: not requiring vast inflows of money, materials and expertise from the

Essentials of Theology: 20 classes	Essentials of Biblical Leadership: 20 classes	Essentials of Pastoral Ministry: 20 classes
Bibliology Humanity & Hamartiology Christology Soteriology Pneumatology Escatology False Teachings & Cults	Personal Spiritual Life Godly Character Godly Relationships Church Life Church Leadership	Bible Study & Interpretation Sermon Preparation Life Changing Preaching Practice Preaching OT Survey NT Survey

U.S. To this end we are taking steps to simplify the training conferences and indigenize the program. The trainings will be held not in western-styled retreat centers, but in commonly available facilities with accommodations familiar to Kenyans (see the photos on the previous pages of the Nairobi and Kijabe facilities).

We will lead a training conference in Nairobi this December to lay the groundwork for what, Lord willing, will become two parallel training programs kicking off in April of next year.

Trainer Focus: 20 classes

- Being a Godly Leader
- Knowing Your Topic
- Preparing Ahead of Time
- Serving Your Students
- Perceiving Your Students Needs
- Investing in Your Students Growth
- Practice Training

The training will take place each April and December with 30 to 40 students in each location. Each training team will present their material twice, once in Kijabe and once in Nairobi. The Kijabe effort will be under the leadership of Pastor Wilfred Githongo (in the previous photos, Wilfred is seated between two other Kenyan pastors), a leader in whom we have developed great confidence. The Nairobi training will be coordinated by Pastor Fred Mukumbu (the red-shirted man speaking with David), a spiritually mature, enthusiastic leader-of-leaders who is burdened to train pastors.

Please pray with us, for God to bless the December training, to lead us as we move toward the April kickoff, and to connect us with partnering U.S. churches who are burdened to invest in this Kingdom building effort in Kenya.

You Can Be Involved in this Great Commission Work

1 First, please pray for us. Much needs to happen to be ready for the December training and official kickoff in April: material development, logistical arrangements, and identifying U.S. partners.

2 Second, we have two immediate financial needs. The cost of the December training in Nairobi is \$8000. Also, the Kijabe training site (see the large photo) requires a few lodging and kitchen upgrades to host our students. We are seeking \$7500 to help defray the cost of these upgrades. Please pray about making a donation to meet these needs.

3 Third, does your church have a passion for Great Commission work in Africa? We are seeking partnerships with several U.S. churches that are burdened to help train God-honoring pastors and church leaders throughout Kenya. If you desire more information, please contact David at: davidp@iblministry.org or 828-628-3100.

How to Make a Donation

- Send a check to: "IBL," with "Kenya" in the memo section. Mail to IBL, PO Box 338, Fairview, NC 28730
- Donate online at: www.iblministry.org/donate and click on the "Ministry in Kenya" link

We recently received this note from one of our coaching clients:

"I am on my front porch reflecting on all I've learned and feeling emotionally drained. I find myself staring at this one tree. It is one of many that my dad and I planted when I was a young boy. A few of the trees died; most are showing signs of disease and decay. But one tree is straight and full, with a solid trunk, healthy limbs, and rich foliage. Then it dawned

on me... this tree is symbolic of what you are teaching me and where I want to be. This is MY tree: a symbol of strength due to a vibrant and healthy root, developed from the spiritual principles God is showing me through your teaching. Looking forward to learning more."

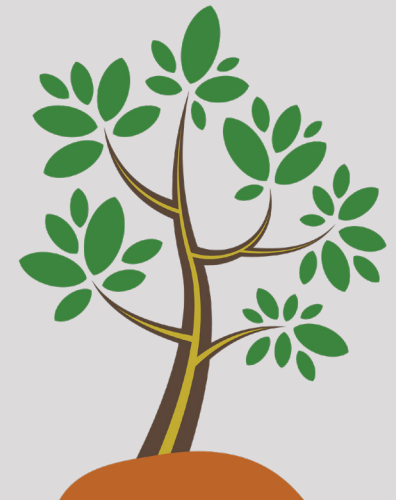
At IBL we talk about trees a lot! Our leadership development program is designed using the metaphor of a "tree of righteousness" as referenced in Isaiah 61:3. We exhort leaders to become strong, healthy, fruitful

trees, as God desires us to be.

Are the roots of your heart-motivations growing deep? Are the limbs of your character strong? Is the foliage of your relationships full and fruitful? And does your spiritual sap flow freely, giving health and life to your entire tree?

Learn more at:
www.iblministry.com

"...so they will be called trees of righteousness, the planting of the Lord, that He may be glorified" (Isaiah 61:3b).



IBL IN THE WEST: Ministry Update

Joel Tetreau, Regional Coordinator for IBL-West

It's been a busy season of travel in recent months and will continue to be so through the fall.

An IBL volunteer and I visited six different ministries in April for the purposes of encouraging church leaders and communicating the mission of IBL. We dubbed this road trip "The IBL-West Encouragement Tour." We visited churches and leaders in Arizona, California and Utah. I've also been working with other IBL team members as we prepare for upcoming ministry.

Looking forward, I'll be joining the rest of the staff in early July at our headquarters in Asheville,

North Carolina for a two-day team meeting. I'll also be doing ministry this summer in Indiana, New Mexico, Iowa, Michigan and Georgia. I'm currently working with other team members on two consulting cases coming up this fall. Lastly, I have a lot of preparation for fall international ministries in Vietnam and Nepal.

I appreciate your prayers as I continue to connect with new friends and partners and raise funds for IBL IN THE WEST. Straight Ahead,



Mailing Address: P.O. Box 338, Fairview, NC 28730